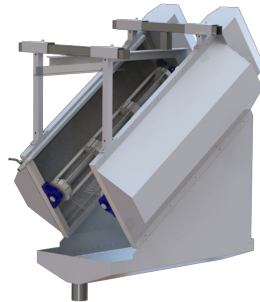


## DEFEATHERING

# SHACKLE WASHER



## DESCRIPTION

The shackle washer cleans continuously the chain and the shackles of the overhead conveyor. The cleaning is carried out by water and by two rotating nylon brushes. Frame and protections are made of stainless steel.

## TECHNICAL DATA

|                 |              |                   |
|-----------------|--------------|-------------------|
| <b>Capacity</b> | <b>8.000</b> | <b>B/h</b>        |
| Length          | 1.050        | mm                |
| Width           | 1.000        | mm                |
| Height          | 900          | mm                |
| Water cons.     | 1,5          | m <sup>3</sup> /h |
| Power installed | 2 x 0,37     | kw                |
| Total weight    | 140          | kg                |
| Shipping volume | 1            | M <sup>3</sup>    |