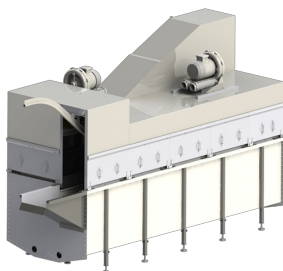


DEFEATHERING

JET SCADLER TWA 3 WAYS



DESCRIPTION

The air jet scalding machine is designed to obtain an efficient scalding of any type of bird before the defeathering and it is available from two to six passes. Each section is complete with air blowing system and heat exchanger operating with steam or hot water. The machine is built in stainless steel sheet and completed with canopy and side doors for cleaning.

TECHNICAL DATA TWA 1/2/3

Model	TWA1	TWA2	TWA3	
Lenght	1.900	3.800	5.700	mm
Width	1.500	1.500	1.500	mm
Chicken bath lenght	2,80	6,60	10,40	m
Boiler capacity	60	120	180	kw/h
Air blowers	1	1	2	N
Blowing power	2,2	4	4	kw
Total power	2,2	4	8	kw
Net weight	750	1.045	1.340	kg
Shipping volume	4,8	9,6	14,4	m³

CONTINUA NELLA PAGINA SUCCESSIVA

TECHNICAL DATA TWA 4/5/6

Model	TWA4	TWA5	TWA6	
Lenght	7.600	9.500	11.400	mm
Width	1.150	1.150	1.150	mm
Chicken bath lenght	14	18	21,80	m
Boiler capacity	240	300	360	kw/h
Air blowers	2	3	3	N
Blowing power	4	4	4	kw
Total power	8	12	12	kw
Net weight	1.635	1.930	2.225	kg
Shipping volume	19	24	28,8	m ³